



CONTEMPORARY GARDEN ROOMS

HANDMADE IN WORCESTERSHIRE FOR OVER 45 YEARS



10 YEAR GUARANTEE WITH ALL OF OUR GARDEN ROOMS

WELCOME TO THE MALVERN COLLECTION

AWARD WINNING HANDMADE QUALITY GARDEN BUILDINGS FOR OVER 45 YEARS

In the early 1970s, we started to design and produce garden buildings at our factory in Worcestershire. All of our buildings are made to order and handcrafted using traditional carpentry techniques by skilled craftsmen, which are then delivered and installed by our own teams of experienced fitters across the country.

BESPOKE GARDEN ROOMS AND OFFICES A ROOM FOR ALL OCCASIONS

- Fully lined and insulated for all year round use
- Fast efficient installation
- Making the most of the space in your garden
- Fully double glazed
- A valuable asset to your home
- Individual bespoke design

Our buildings offer a wide range of stylish and practical solutions for your garden.

Move your office or hobby out of the house and into a fresh new environment. Our buildings create the perfect place for working from home or for your leisure activity by creating an inspirational room in your garden.

The buildings shown are only a guide to what we can achieve. Each building we make is designed to your exact individual requirements. If the size or design you require is not shown in our brochure then please contact us to discuss your specific ideas and plans.

At Malvern, we use only the highest quality materials from sustainable sources. Our buildings are constructed using Scandinavian Redwood or Canadian Western Red kiln dried cedar.

We strongly recommend that you visit one of our display sites, where you can examine for yourself the quality, design and materials used in the manufacture of our buildings. Experienced staff will be on hand to discuss your individual requirements.

Thank you for taking the time to look through our brochure.





STANDARD FEATURES

- A choice of either Scandinavian Redwood or Western Red Cedar Cladding
- UPVC doors and windows
- Glass to ground glazing to front
- One glass to ground window in each side
- Two privacy style vent windows to rear
- Double doors
- Double glazed throughout
- EPDM rubber roof (Flat roof only)
- Bitumen felt tiles (Apex or Hipped only)
- Guttering to rear (Flat roof only)
- A painted patterned MDF internal lining
- Fully insulated
- 19mm heavy duty floor
- Colour paint finish

OPTIONS

- Internal Cedar Lining
- Laminate flooring
- Tinted glass
- Cedar shingle roof (Apex or Hipped only)
- Slate effect tiled roof (Apex or Hipped only)
- Guttering (Apex or Hipped)
- Extra glass to ground windows
- Extra privacy windows
- Additional doors
- Internal partitions
- Internal doors

THE HANLEY

Size w x d	Flat or Apex Roof			Hipped Roof			Internal Cedar Lining	Pressure Treated Cedar Shingle Roof		Slate Effect Tiled Roof		Laminate Flooring	Tinted Glass
	Redwood	Heavy Duty Redwood	Cedar	Redwood	Heavy Duty Redwood	Cedar		Apex	Hipped	Apex	Hipped		
10' x 8'	17,010	17,310	19,460	18,715	19,015	21,165	1,585	1,305	1,930	1,465	2,175	955	600
12' x 8'	19,310	19,650	22,040	21,235	21,575	23,965	1,790	1,575	2,330	1,770	2,620	1,140	640
14' x 8'	21,710	22,085	24,710	23,875	24,250	26,870	1,990	1,840	2,715	2,070	3,055	1,330	700
16' x 8'	24,045	24,460	27,370	26,445	26,860	29,770	2,185	2,120	3,120	2,385	3,515	1,525	770
18' x 8'	26,725	27,165	30,250	29,335	29,775	32,860	2,375	2,340	3,460	2,635	3,895	1,715	830
12' x 10'	23,725	24,120	26,870	26,115	26,515	29,260	2,035	1,815	2,695	2,045	3,035	1,430	640
14' x 10'	26,665	27,095	30,075	29,330	29,760	32,740	2,250	2,130	3,150	2,390	3,550	1,675	700
16' x 10'	29,440	29,910	33,180	32,400	32,875	36,140	2,480	2,420	3,590	2,725	4,035	1,905	770
18' x 10'	32,430	32,925	36,370	35,665	36,160	39,605	2,695	2,715	3,880	3,055	4,365	2,150	830
20' x 10'	35,135	35,695	39,560	38,640	39,205	43,070	2,915	3,020	4,460	3,400	5,020	2,375	925
22' x 10'	38,145	38,730	42,750	41,935	42,520	46,540	3,130	3,320	4,905	3,730	5,520	2,605	1,035
24' x 10'	41,005	41,630	45,945	45,070	45,695	50,010	3,350	3,600	5,320	4,050	5,985	2,840	1,135
14' x 12'	30,315	30,805	34,140	33,390	33,880	37,215	2,535	2,390	3,555	2,690	3,995	2,000	700
16' x 12'	33,525	34,050	37,675	36,915	37,445	41,065	2,755	2,735	4,070	3,080	4,585	2,285	770
18' x 12'	36,845	37,400	41,200	40,550	41,100	44,900	3,000	3,110	4,605	3,500	5,180	2,565	830
20' x 12'	39,920	40,545	44,765	43,960	44,580	48,800	3,245	3,455	5,120	3,885	5,755	2,845	925
22' x 12'	43,250	43,895	48,270	47,580	48,225	52,600	3,480	3,800	5,795	4,280	6,520	3,130	1,035
24' x 12'	46,535	47,225	51,890	51,060	51,750	56,415	3,715	4,145	6,320	4,665	7,105	3,410	1,135
16' x 14'	37,725	38,305	42,240	n/a	n/a	n/a	3,060	3,365	n/a	3,785	n/a	2,655	770
18' x 14'	41,485	42,090	46,200	n/a	n/a	n/a	3,320	3,785	n/a	4,255	n/a	2,975	830
20' x 14'	44,960	45,630	50,165	n/a	n/a	n/a	3,565	4,210	n/a	4,740	n/a	3,330	925
22' x 14'	48,735	49,435	54,120	n/a	n/a	n/a	3,825	4,630	n/a	5,210	n/a	3,670	1,035
18' x 16'*	44,975	45,690	50,600	n/a	n/a	n/a	3,625	4,295	n/a	4,830	n/a	3,415	830
20' x 16'*	48,745	49,515	54,830	n/a	n/a	n/a	3,880	4,775	n/a	5,370	n/a	3,805	925

* Apex Only

OPTIONAL UPGRADES AVAILABLE ON THE HANLEY

Additional 615mm glass to ground fixed window	Additional 915mm glass to ground fixed window	Additional 1200mm glass to ground fixed window	Additional Privacy Vent Window	Additional Single door	Additional Double doors	Additional Single Sliding door	Solid/half glazed internal door	Roof Velux (Apex and Hipped only)	Internal Wall Partitions (per ft run) MDF	Internal Wall Partitions (per ft run) Cedar	Small Integral blind	Medium integral blind	Large integral blind	Guttering (including downpipe per ft run) Fitted on Flat as standard
685	750	820	700	1,120	2,065	2,975	620	1,270	140	200	545	865	1,030	15



STANDARD FEATURES

- A choice of either Scandinavian Redwood or Western Red Cedar Cladding
- Powder coated aluminium doors and windows
- Glass to ground glazing to front
- One glass to ground window in each side
- Two aluminium privacy style vent windows to rear
- Double doors
- Double glazed throughout
- EPDM rubber roof (Flat roof only)
- Bitumen felt tiles (Apex or Hipped only)
- Guttering to rear (Flat roof only)
- A painted patterned MDF internal lining
- Fully insulated
- 19mm heavy duty floor
- Colour paint finish

OPTIONS

- Internal Cedar Lining
- Laminate flooring
- Tinted glass
- Cedar shingle roof (Apex or Hipped only)
- Slate effect tiled roof (Apex or Hipped only)
- Guttering (Apex or Hipped)
- Extra glass to ground windows
- Extra privacy windows
- Additional doors
- Internal partitions
- Internal doors

THE HANLEY PLUS

Size w x d	Flat or Apex Roof			Hipped Roof			Internal Cedar Lining	Pressure Treated Cedar Shingle Roof		Slate Effect Tiled Roof		Laminate Flooring	Tinted Glass
	Redwood	Heavy Duty Redwood	Cedar	Redwood	Heavy Duty Redwood	Cedar		Apex	Hipped	Apex	Hipped		
10' x 8'	23,680	23,980	26,130	25,620	25,920	28,070	1,585	1,305	1,930	1,465	2,175	955	600
12' x 8'	26,330	26,670	29,060	28,210	28,550	30,940	1,790	1,575	2,330	1,770	2,620	1,140	640
14' x 8'	28,855	29,225	31,850	31,015	31,390	34,010	1,990	1,840	2,715	2,070	3,055	1,330	700
16' x 8'	31,065	31,480	34,390	33,705	34,120	37,030	2,185	2,120	3,120	2,385	3,515	1,525	770
18' x 8'	34,105	34,540	37,630	36,720	37,155	40,245	2,375	2,340	3,460	2,635	3,895	1,715	830
12' x 10'	30,745	31,140	33,890	33,135	33,535	36,285	2,035	1,815	2,695	2,045	3,035	1,430	640
14' x 10'	33,805	34,235	37,215	36,470	36,905	39,880	2,250	2,130	3,150	2,390	3,550	1,675	700
16' x 10'	36,700	37,175	40,440	39,660	40,130	43,395	2,480	2,420	3,590	2,725	4,035	1,905	770
18' x 10'	39,805	40,300	43,745	43,045	43,540	46,985	2,695	2,715	3,880	3,055	4,365	2,150	830
20' x 10'	42,745	43,310	47,175	46,260	46,820	50,685	2,915	3,020	4,460	3,400	5,020	2,375	925
22' x 10'	46,120	46,705	50,725	49,910	50,495	54,515	3,130	3,320	4,905	3,730	5,520	2,605	1,035
24' x 10'	49,335	49,960	54,275	53,400	54,025	58,340	3,350	3,600	5,320	4,050	5,985	2,840	1,135
14' x 12'	37,455	37,945	41,280	40,530	41,020	44,355	2,535	2,390	3,555	2,690	3,995	2,000	700
16' x 12'	40,545	41,070	44,695	44,055	44,585	48,210	2,755	2,735	4,070	3,080	4,585	2,285	770
18' x 12'	44,230	44,780	48,580	47,925	48,480	52,280	3,000	3,110	4,605	3,500	5,180	2,565	830
20' x 12'	47,540	48,160	52,385	51,580	52,200	56,420	3,245	3,455	5,120	3,885	5,755	2,845	925
22' x 12'	51,225	51,870	56,245	55,555	56,200	60,575	3,480	3,800	5,795	4,280	6,520	3,130	1,035
24' x 12'	54,865	55,555	60,220	59,390	60,080	64,745	3,715	4,145	6,320	4,665	7,105	3,410	1,135
16' x 14'	44,990	45,570	49,500	n/a	n/a	n/a	3,060	3,365	n/a	3,785	n/a	2,655	770
18' x 14'	48,865	49,465	53,580	n/a	n/a	n/a	3,320	3,785	n/a	4,255	n/a	2,975	830
20' x 14'	52,580	53,250	57,780	n/a	n/a	n/a	3,565	4,210	n/a	4,740	n/a	3,330	925
22' x 14'	56,710	57,410	62,095	n/a	n/a	n/a	3,825	4,630	n/a	5,210	n/a	3,670	1,035
18' x 16'*	52,865	53,545	58,200	n/a	n/a	n/a	3,625	4,295	n/a	4,830	n/a	3,415	830
20' x 16'*	57,280	58,010	63,060	n/a	n/a	n/a	3,880	4,775	n/a	5,370	n/a	3,805	925

* Apex Only

OPTIONAL UPGRADES AVAILABLE ON THE HANLEY PLUS

Additional 610mm glass to ground fixed window	Additional 915mm glass to ground fixed window	Additional 1200mm glass to ground fixed window	Additional Privacy Vent Window	Additional Single Door	Additional Double Doors	Additional Single Sliding door	Solid/half glazed internal door	Roof Velux (Apex and Hipped Only)	Internal Wall Partition (per ft run) MDF	Internal Wall Partition (per ft run) Cedar	Small integral blind	Medium integral blind	Large integral blind	Guttering (including downpipe per ft run) Fitted on Flat as standard
1,450	1,535	1,620	1,495	3,265	6,295	6,855	620	1,270	140	200	545	865	1,030	15



STANDARD FEATURES

- A choice of either Scandinavian Redwood or Western Red Cedar Cladding
- Heritage style powder coated aluminium doors and windows
- Full Heritage style glazing to front
- One full window in each side
- Two aluminium privacy style vent windows to rear
- Double doors
- Double glazed throughout
- EPDM rubber roof (Flat roof only)
- Bitumen felt tiles (Apex or Hipped only)
- Guttering to rear (Flat roof only)
- A painted patterned MDF internal lining
- Fully insulated
- 19mm heavy duty floor
- Colour paint finish

OPTIONS

- Internal Cedar Lining
- Laminate flooring
- Tinted glass
- Cedar shingle roof (Apex or Hipped only)
- Slate effect tiled roof (Apex or Hipped only)
- Guttering (Apex or Hipped)
- Extra glass to ground windows (prices on request)
- Extra privacy windows
- Additional doors (prices on request)
- Internal partitions
- Internal doors

THE HANLEY HERITAGE

Size w x d	Flat or Apex Roof			Hipped Roof			Internal Cedar Lining	Pressure Treated Cedar Shingle Roof		Slate Effect Tiled Roof		Laminate Flooring	Tinted Glass
	Redwood	Heavy Duty Redwood	Cedar	Redwood	Heavy Duty Redwood	Cedar		Apex	Hipped	Apex	Hipped		
10' x 8'	25,340	25,640	27,790	27,050	27,345	29,500	1,585	1,305	1,930	1,465	2,175	955	600
12' x 8'	28,590	28,930	31,320	30,520	30,860	33,250	1,790	1,575	2,330	1,770	2,620	1,140	640
14' x 8'	31,955	32,325	34,950	34,110	34,485	37,105	1,990	1,840	2,715	2,070	3,055	1,330	700
16' x 8'	34,760	35,175	38,080	37,155	37,570	40,480	2,185	2,120	3,120	2,385	3,515	1,525	770
18' x 8'	38,395	38,830	41,920	41,005	41,440	44,530	2,375	2,340	3,460	2,635	3,895	1,715	830
12' x 10'	33,010	33,410	36,155	35,405	35,800	38,550	2,035	1,815	2,695	2,045	3,035	1,430	640
14' x 10'	36,900	37,330	40,310	39,565	39,995	42,975	2,250	2,130	3,150	2,390	3,550	1,675	700
16' x 10'	40,150	40,625	43,890	43,115	43,585	46,850	2,480	2,420	3,590	2,725	4,035	1,905	770
18' x 10'	44,090	44,585	48,030	47,335	47,830	51,275	2,695	2,715	3,880	3,055	4,365	2,150	830
20' x 10'	47,625	48,190	52,055	51,140	51,705	55,570	2,915	3,020	4,460	3,400	5,020	2,375	925
22' x 10'	51,600	52,185	56,205	55,385	55,970	59,990	3,130	3,320	4,905	3,730	5,520	2,605	1,035
24' x 10'	55,285	55,915	60,225	59,350	59,980	64,290	3,350	3,600	5,320	4,050	5,985	2,840	1,135
14' x 12'	40,550	41,040	44,375	43,625	44,115	47,450	2,535	2,390	3,555	2,690	3,995	2,000	700
16' x 12'	44,235	44,765	48,385	47,625	48,155	51,780	2,755	2,735	4,070	3,080	4,585	2,285	770
18' x 12'	48,515	49,065	52,865	52,215	52,770	56,570	3,000	3,110	4,605	3,500	5,180	2,565	830
20' x 12'	52,425	53,045	57,265	56,460	57,080	61,300	3,245	3,455	5,120	3,885	5,755	2,845	925
22' x 12'	56,700	57,345	61,720	61,030	61,675	66,050	3,480	3,800	5,795	4,280	6,520	3,130	1,035
24' x 12'	60,820	61,510	66,170	65,345	66,035	70,695	3,715	4,145	6,320	4,665	7,105	3,410	1,135
16' x 14'	48,440	49,020	52,950	n/a	n/a	n/a	3,060	3,365	n/a	3,785	n/a	2,655	770
18' x 14'	53,145	53,750	57,860	n/a	n/a	n/a	3,320	3,785	n/a	4,255	n/a	2,975	830
20' x 14'	57,460	58,135	62,665	n/a	n/a	n/a	3,565	4,210	n/a	4,740	n/a	3,330	925
22' x 14'	62,185	62,880	67,570	n/a	n/a	n/a	3,825	4,630	n/a	5,210	n/a	3,670	1,035
18' x 16'*	57,025	57,690	62,260	n/a	n/a	n/a	3,625	4,295	n/a	4,830	n/a	3,415	830
20' x 16'*	61,670	62,390	67,335	n/a	n/a	n/a	3,880	4,775	n/a	5,370	n/a	3,805	925

* Apex Only

OPTIONAL UPGRADES AVAILABLE ON THE HANLEY HERITAGE

Additional Privacy Vent Window	Solid/half glazed internal door	Roof Velux (Apex and Hipped Only)	Internal Wall Partition (per ft run) MDF	Internal Wall Partition (per ft run) Cedar	Guttering (including downpipe per ft run) Fitted on Flat as standard
1,495	620	1,270	140	200	15



STANDARD FEATURES

- Western Red Cedar Cladding
- Aluminium powder coated doors, windows and sills
- Bi-folding or sliding doors
- Glass to ground glazing to front
- One aluminium glass to ground window in each side
- Two aluminium privacy style vent windows to rear
- Double glazed throughout
- Steel framed floor
- Steel corner front posts
- Steel lintel across the front
- EPDM rubber roof
- Guttering to rear
- Powder coated galvanised steel fascia boards and soffits
- A painted patterned MDF internal lining
- Fully insulated
- Colour paint finish

OPTIONS

- Internal Cedar Lining
- Laminate flooring
- Tinted glass
- Extra glass to ground windows (prices on request)
- Extra privacy windows
- Additional doors (prices on request)
- Internal partitions
- Internal doors

THE CHARFORD

Size w x d	Flat Roof	Internal Cedar Lining	Laminate Flooring	Tinted Glass
10' x 8'	34,255	1,585	955	600
12' x 8'	38,575	1,790	1,140	640
14' x 8'	41,900	1,990	1,330	700
16' x 8'	45,930	2,185	1,525	770
18' x 8'	50,880	2,375	1,715	830
12' x 10'	42,625	2,035	1,430	640
14' x 10'	47,020	2,250	1,675	700
16' x 10'	50,725	2,480	1,905	770
18' x 10'	56,015	2,695	2,150	830
20' x 10'	59,975	2,915	2,375	925
22' x 10'	65,550	3,130	2,605	1,035
24' x 10'	70,250	3,350	2,840	1,135
26' x 10'	74,940	3,575	3,080	1,235
14' x 12'	50,905	2,535	2,000	700
16' x 12'	56,535	2,755	2,285	770
18' x 12'	62,215	3,000	2,565	830
20' x 12'	66,740	3,245	2,845	925
22' x 12'	72,115	3,480	3,130	1,035
24' x 12'	77,345	3,715	3,410	1,135
26' x 12'	82,570	3,955	3,730	1,235
16' x 14'	61,930	3,060	2,655	770
18' x 14'	67,670	3,320	2,975	830
20' x 14'	72,575	3,565	3,330	925
22' x 14'	78,740	3,825	3,670	1,035

OPTIONAL UPGRADES AVAILABLE ON THE CHARFORD

Additional Privacy Vent Window	Solid/half glazed internal door	Roof Velux (Apex and Hipped Only)	Internal Wall Partition (per ft run) MDF	Internal Wall Partition (per ft run) Cedar
1,495	620	1,270	140	200

HANLEY, HANLEY PLUS & HERITAGE TECHNICAL SPECIFICATION

WALL CONSTRUCTION

Either Scandinavian Redwood or Western Red Cedar timber is used to clad to the external walls of the garden room. The timber clad walls are then lined with a breather paper membrane. Scandinavian redwood is used for the internal frame construction. The cavity walls are insulated using 50mm foil backed insulation board. Internally, the walls are lined with 9mm prepainted patterned MDF as standard, upgrade available of 11mm cedar tongue & groove matchboard.

FLOOR

19mm redwood tongue and groove boards fixed to 44mm x 69mm pressure treated redwood joists with a breathable paper membrane sandwiched between. The floors are sprayed with a high quality timber preservative. Techniboard insulation is laid on top of the internal floor.

ROOF

Scandinavian redwood is used for our roof framework construction. 12mm tongue and groove matchboard is used on our flat roof models which are then covered by an EPDM rubber roof system. On the apex and hipped roof models, heavy duty bitumen roof tiles are laid onto 12mm redwood tongue and groove boards.

A breathable paper membrane is fixed between the roof boards and the redwood joists on all models. Our roof sections are sprayed with a high quality timber preservative prior to leaving the factory. 50mm foil backed insulation fills the cavity between the joists and 9mm prepainted patterned MDF lining. Cedar shingles can be used as an optional upgrade on the apex and hipped models. Guttering is fitted to the rear on a flat roof model as standard and as an option on the apex and hipped models.

EXTERNAL FINISH

A comprehensive paint system is applied prior to the building leaving the factory to protect and decorate your building. The paint system comprises of an initial undercoat and a further top coat of your chosen colour. A wide selection of colours are available to suit.

HANLEY DOORS & WINDOWS

All Hanley windows and doors are made from uPVC and fitted with double glazed units using 4mm toughened glass with Planitherm heat loss coating as standard. All opening windows are fitted with a lockable key catch.

HANLEY PLUS DOORS & WINDOWS

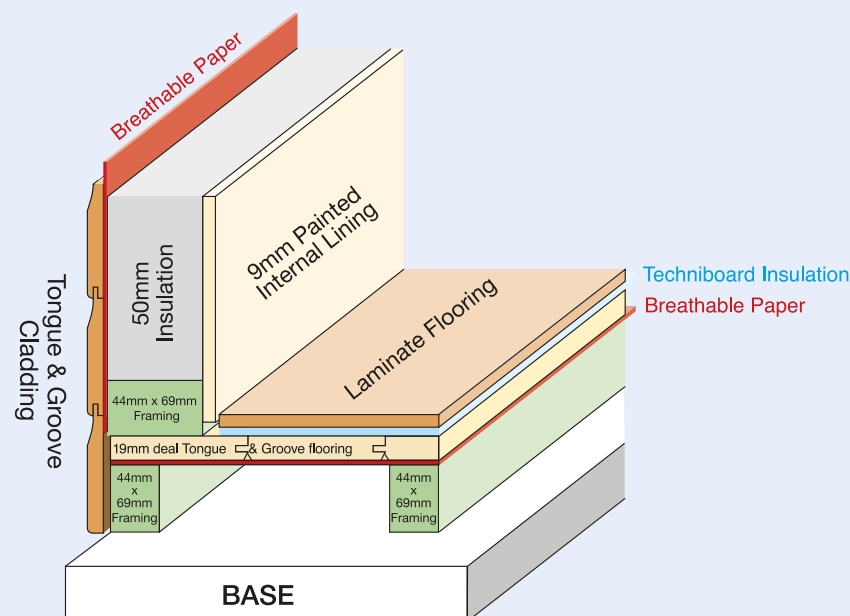
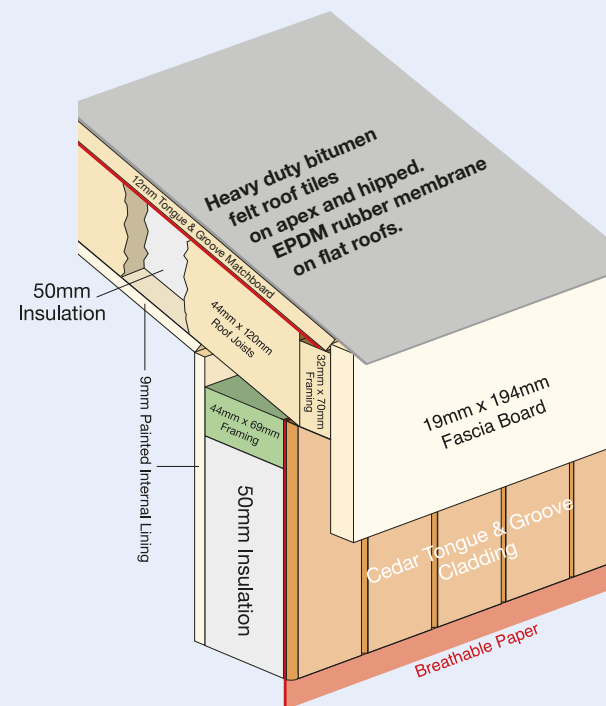
All Hanley Plus windows and doors are made from powder coated aluminium and fitted with double glazed units using 4mm toughened glass with Planitherm heat loss coating as standard.

INTEGRAL BLINDS

The integral blind system is available as an optional upgrade (excluding Hanley Heritage) and is a great alternative to curtains or fitted blinds. The integral blinds are fitted within the sealed double glazed units and are operated by a magnetic control. These are available in a choice of colours.

GUARANTEE

All Malvern Garden Rooms come with a 10 year timber guarantee against rot and decay. Aluminium doors, windows and EPDM rubber roof come with a 10 year guarantee. All other workmanship and materials are guaranteed for a twelve month period from date of installation.



CHARFORD TECHNICAL SPECIFICATION

WALL CONSTRUCTION

Two steel front corner posts and window support posts are manufactured using zinc primed hot rolled steel to carry galvanised lintels (see picture opposite). We believe this steel frame construction is essential when fitting sliding or bi-folding doors and provides strength and rigidity that these type of doors systems require. Western Red Cedar timber is used to clad to the external walls of the garden room. The timber clad walls are then lined with a breather paper membrane. Scandinavian redwood is used for the internal frame construction. The cavity walls are then insulated using 50mm foil backed insulation board. Internally, the walls are lined with 9mm prepainted patterned MDF as standard, upgrade available of 11mm cedar tongue & groove matchboard.

FLOOR

Steel framing cold rolled galvanised 'C' section is used for the complete base structure with a neoprene seal adhered to the steel to provide a thermal break. 12mm plyboard is then fixed over the steel base structure and 25mm foil backed insulation laid on top. Another layer of 12mm ply is then placed over the insulation board. If the optional laminate is then required, a further techniboard underlay is placed over the top of the plyboard and finally covered by the laminate flooring.

ROOF

An EDPM rubber roof for longevity covers a 12mm tongue and groove matchboard to Scandinavian redwood joists. The cavity is filled with 50mm foil backed insulation and the internal then lined with a 9mm prepainted patterned MDF.

EXTERNAL FINISH

A comprehensive paint system is applied prior to the building leaving the factory to protect and decorate your building. The paint system comprises of an initial undercoat and top coat of your chosen colour. A wide selection of colours are available to suit.

CHARFORD DOORS & WINDOWS

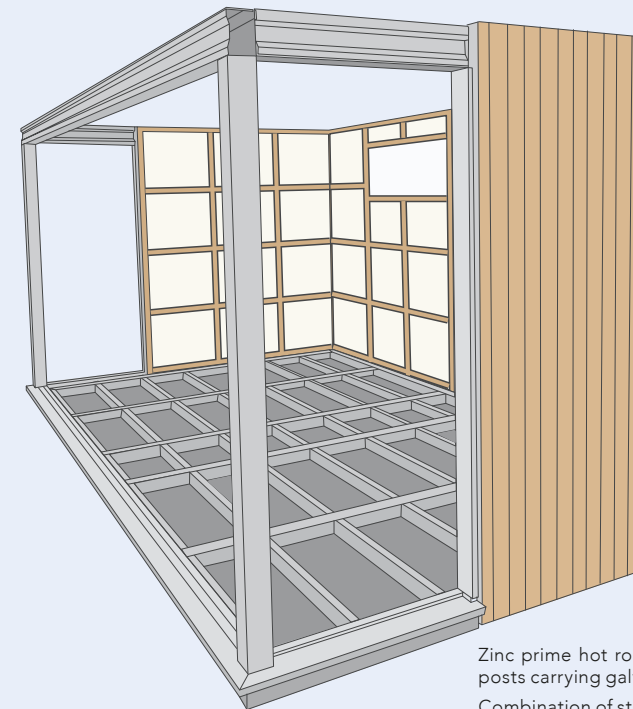
All Charford windows and doors are made from powder coated aluminium and fitted with double glazed units using 4mm toughened glass with Planitherm heat loss coating as standard. The Charford comes with either aluminium bi-folding or sliding style doors.

INTEGRAL BLINDS

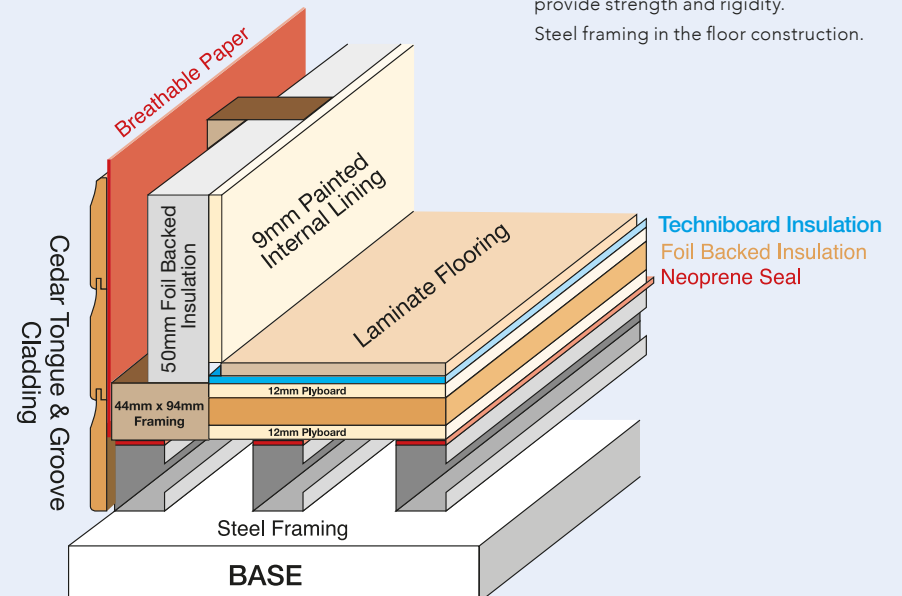
The integral blind system is available as an optional upgrade and is a great alternative to curtains or fitted blinds. The integral blinds are fitted within the sealed double glazed units and are operated by a magnetic control. These are available in a choice of colours.

GUARANTEE

All Malvern Garden Rooms come with a 10 year timber guarantee against rot and decay. Aluminium doors, windows and EPDM rubber roof come with a 10 year guarantee. All other workmanship and materials are guaranteed for a twelve month period from date of installation.



Zinc prime hot rolled steel front corner posts carrying galvanised lintels.
Combination of steel posts and lintels to provide strength and rigidity.
Steel framing in the floor construction.



FEATURES & OPTIONS

COLOUR PAINT FINISH

A comprehensive paint system is applied prior to the building leaving the factory. The paint system comprises of an initial undercoat and a further two top coats of your chosen colour.

DOUBLE GLAZING

All double glazing units use 4mm toughened glass with Planitherm heat loss coating as standard.

TINTED GLASS

All glazing has one side with an anti-sun tint applied to the unit.

INTEGRAL BLINDS

Blinds within the double glazed unit available in a choice of colours.

EPDM RUBBER ROOF

A maintenance free synthetic rubber membrane covering the roof. EPDM is designed specifically as a flat roof material, it is installed in one piece with no overlapping. This means that rainwater will not be able to penetrate or get beneath the surface. EPDM will also repel all moisture and 'breathes', allowing vapours to escape, thus preventing blisters. It is also highly resistant to UV (Ultraviolet light) and IR (Infrared light) and does not suffer with age from cracking or grazing.

BITUMEN FELT TILES

Roof is covered with tile effect heavy duty felt tiles on the apex and hipped roof models in a choice of three colours.

CEDAR SHINGLE ROOF

Western Red cedar shingles fixed to pressure treated joists to enhance the appearance of your building and provide added protection to the roofing felt beneath, apex and hipped roof models.

SLATE EFFECT ROOF TILE

Slate effect roof tile is a synthetic roof tile which emulates the appearance of natural slates and has a long life span with no maintenance.

MDF

Walls are lined with 9mm pre-painted patterned MDF.

INSULATION

50mm foil back insulation.

GUTTERING

Guttering is available in a choice of three colours.

LAMINATE

Premium hard wearing laminate flooring with a wide range of styles to choose from.

LOCKING SYSTEMS

All Garden rooms are fitted with multi point security system as standard, lockable casement privacy windows and a choice of colour finishes are available. The Hanley, Hanley Plus and Charford have chrome fittings and the Hanley Heritage black as standard.

BUILDING DIMENSIONS

Charford heights

Depth	Front	Rear
8' (2.44m)	2.49m	2.49m
10' (3.05m)	2.49m	2.49m
12' (3.66m)	2.49m	2.49m
14' (4.27m)	2.49m	2.49m

Hipped heights

Depth	Ridge	Rear
8' (2.44m)	3.07m	2.40m
10' (3.05m)	3.26m	2.40m
12' (3.66m)	3.45m	2.40m

Apex heights

Depth	Ridge	Eaves
8' (2.44m)	3.07m	2.40m
10' (3.05m)	3.26m	2.40m
12' (3.66m)	3.45m	2.40m
14' (4.27m)	3.24m	2.40m
16' (4.88m)	3.26m	2.40m

Flat heights

Depth	Ridge	Eaves
8' (2.44m)	2.49m	2.49m
10' (3.05m)	2.49m	2.49m
12' (3.66m)	2.49m	2.49m
14' (4.27m)	2.49m	2.49m

All prices are in (£) Pound Sterling

IMPORTANT POINTS TO NOTE

All of our Garden Rooms come with a ten year guarantee against rot and decay. All other workmanship and materials are guaranteed to be free from defects and faulty installation for a period of 12 months. All of our guarantees are subject to the buildings being maintained in line with our recommendations.

We would like to remind customers that timber is an organic product, subject to naturally occurring changes that result from different environmental conditions i.e. changes in colour, surface splits and shrinkage. We cannot accept responsibility for these natural changes.

All base work is the responsibility of the customer, as is the safe securing of the building once installed. We require a level solid base, either paving slabs, decking or concrete upon which to install your building. In the event of a base failure, it is the customers responsibility to accept delivery of the building and store appropriately.

Please allow as much room as possible around the building for our fitters to work during installation, a minimum of 18". If this is not possible please contact the office to discuss.

Our installers will need clear access to carry building sections from the vehicle to your prepared base, with no height restrictions or tight, sharp corners to negotiate.

Our installers cannot lift sections over 4' in height or over buildings such as garages. If the only access is through the house, a straight run is required and many sections will not pass through doorways. Please advise us in advance if there are any difficulties regarding access.

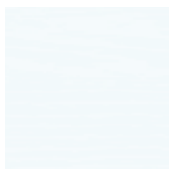
Always make allowance for any roof overhang when buildings have to go into confined spaces.

All building dimensions shown in this brochure are approximate, based on floor sizes.

All timber used in the construction of our buildings originates from sustainable forests.

As it is our policy to continually improve products, methods and materials, we reserve the right to change specifications from time to time, we will not make any significant variations without your agreement.

COLOURS AVAILABLE

			
Stone Green	Cornsilk	Dark Olive	Malvern Green
			
Olive Grey	Vintage White	Gypsy Green	Rush Green
			
Fern Green	Honey Dew	Mustard	Reflections
			
Dove Grey	Soft White	Ruddy Red	Ocean Blue
			
Urban Grey	White Smoke	Schoolhouse Ink	Squid Ink
			
Pebble	Fleet Grey	Graphite Grey	Green Black

The swatches above are for illustration purposes only as the printing process may not allow an accurate colour representation of paint or stain based finishes. We advise when selecting a final colour choice to request a painted timber sample prior to doing so.

OTHER RANGES AVAILABLE...



Traditional Summerhouses



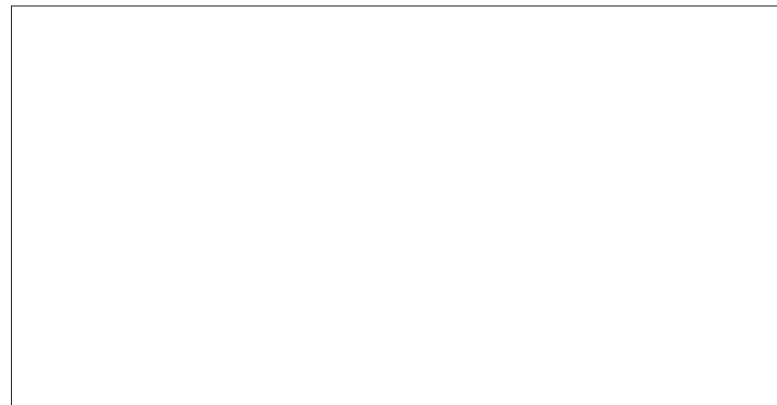
Garden Studios



Sheds and Workshops



Cottage Range of Cedar Buildings



QUALITY GARDEN BUILDINGS

Manufactured and installed by The Malvern Collection Limited. All prices include VAT and delivery to mainland England, Wales and Scotland* up to the Caledonian Canal.

*Restrictions may apply.

As it is our policy to continually improve products, methods and materials, we reserve the right to change specifications from time to time. We will not make any significant variations without your agreement. Please note photos are for illustration purposes only and are not always standard specification. All building sizes are approximate and for guidelines only. All timber measurements, if stated, are finished sizes only i.e. after machining. Please note that finished sizes can vary by plus or minus 1mm.